



**Truck, Bus and Wheels  
OE Manufacturer**



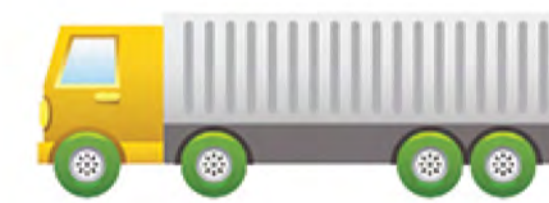
# TBR (Truck and Bus Radial)



## YTH1

Size	PR	SS	Rim	LI	TD (mm)
7.5R16LT	14	K	6.00G	122/118	11.5
8.25R16LT	16	K	6.50H	128/124	11.5
9.00R20	16	K	7.00	144/142	13.5
10.00R20	18	K	7.50	149/146	14.5
11.00R20	18	K	8.00	152/149	16.5
12.00R20	20	K	8.50	156/153	16.5
12.00R24	20	K	8.50	160/157	15.0
<b>11R22.5</b>	<b>16</b>	<b>K</b>	<b>8.25</b>	<b>146/143</b>	<b>16.0</b> *
315/80R22.5	20	L	9.00	156/150	16.5
12R22.5	18	L	9.00	152/149	14.5

\* PBS Approved



**All Position**  
 Recommended

The Durun YTH1 is designed as an all purpose on and off road tyre suitable for Australian conditions. It is an all position tyre with the capability to perform both on and off road.

- The 3 curved groove design gives excellent traction in all positions
- Tread compounds designed to lower operating temperatures, improve abrasion resistance and maximise mileage
- Optimised bead and belt package ensures durability
- Tyre construction ensures casing integrity and maximises retreadability

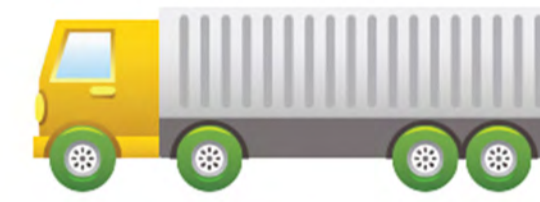


# TBR (Truck and Bus Radial)



## YTH2

Size	PR	SS	Rim	LI	TD (mm)
9.00R20	16	K	7.00	144/142	15.0
10.00R20	18	K	7.50	149/146	17.0
11.00R20	18	K	8.00	152/149	17.0
11R22.5	16	K	8.25	146/143	17.0
10R22.5	16	L	7.50	144/142	15.0



**All Position**  
Recommended

The **Durun YTH2** is an all position highway tyre. It has been engineered to reduce road noise, maximise mileage and remove irregular wear.

- The 4 curved groove design helps prevent irregular wear
- A closed shoulder together with increased tread pitch improves handling and traction
- Optimised bead and belt package ensures durability
- Tyre construction ensures casing integrity and retreadability



# TBR (Truck and Bus Radial)



Size	PR	SS	Rim	LI	TD (mm)
215/75R17.5	16	J	6.00	135/133	12.5
225/70R19.5	14	M	6.75	128/126	12.5
235/75R17.5	16	J	6.75	143/141	12.5
245/70R19.5	16	J	7.50	135/133	12.5
255/70R22.5	16	J	7.50	140/137	12.5
265/70R19.5	16	J	7.50	143/141	12.5
<b>11R22.5</b>	<b>16</b>	<b>K</b>	<b>8.25</b>	<b>146/143</b>	<b>14.5</b> *
11R24.5	16	K	8.25	149/146	14.5

\* PBS Approved



**All Position**

 Recommended

## YTH4

The Durun YTH4 is designed for a wide range of applications and offers excellent mileage in high speed applications as well as urban use.

- Tread compounds offer increased tyre stiffness improving road handling
- High density blading gives improved braking and wet weather performance
- Optimised bead and belt package ensures durability
- Excellent self cleaning tread design



# TBR (Truck and Bus Radial)




## YTH6

Size	PR	SS	Rim	LI	TD (mm)
11R22.5	14	K	8.25	144/142	21.5
11R22.5	16	K	8.25	146/143	21.5
11R24.5	14	K	8.25	146/143	21.5
11R24.5	16	K	8.25	149/146	21.5
295/75R22.5	14	K	9.00	144/141	21.5
295/75R22.5	16	K	9.00	146/143	21.5
285/75R24.5	14	K	8.25	144/141	21.5
285/75R24.5	16	K	8.25	147/144	21.5



**Drive or Trailer**

 Recommended

The **Durun YTH6** is designed for a wide range of applications and offers excellent mileage in high speed applications as well as urban use.

- Tread compounds offer increased tyre stiffness improving road handling
- High density blading gives improved braking and wet weather performance
- Optimised bead and belt package ensures durability
- Excellent self cleaning tread design



# TBR (Truck and Bus Radial)



## YTH7

Size	PR	SS	Rim	LI	TD (mm)
12R22.5	18	L	9.00	152/149	14.5
295/80R22.5	18	L	9.00	152/149	14.5
315/80R22.5	18	L	9.00	154/151	14.5



**Steer or Trailer**

 Recommended

The Durun YTH7 is a premium highway steer tyre offering both improved mileage and handling.

- Tread compounds offer increased tyre stiffness improving road handling
- Engineered to minimise road noise
- Optimised bead and belt package ensures durability
- Tyre construction ensures casing integrity and retreadability



# TBR (Truck and Bus Radial)



Size	PR	SS	Rim	LI	TD (mm)
295/80R22.5	18	L	9.00	152/149	21.5
315/80R22.5	18	L	9.00	154/151	22.5
12R22.5	16	L	9.00	150/147	17.0
11.00R20	18	K	8.00	152/149	17.0



**Drive**

 Recommended

## YTH8

The **Durun YTH8** is a premium highway drive tyre offering high levels of traction and braking whilst reducing wear.

- Tread compounds and profile offer lower rolling resistance
- Engineered to minimise road noise and improve braking
- Optimised bead and belt package ensures durability
- Tyre construction ensures casing integrity and retreadability



# TBR (Truck and Bus Radial)



## YTH10

Size	PR	SS	Rim	LI	TD (mm)
385/65R22.5	18	K	11.75	158	15.0
385/65R22.5	20	K	11.75	160	15.0



**Steer or Trailer**

 Recommended

The **Durun YTH10** is a premium super single tyre designed for highway use in various positions.

- The longitudinal design offers excellent high speed handling and minimises road noise
- A closed shoulder together with multi direction sipe design improves handling and traction
- Optimised bead and belt package ensures durability



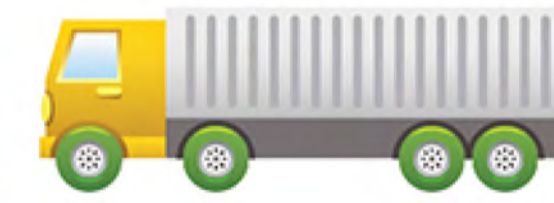


# TBR (Truck and Bus Radial)



## YT102

Size	PR	SS	Rim	LI	TD (mm)
7.00R16LT	10	L	5.50F	111/107	11.5
7.00R16LT	12	L	5.50F	115/110	11.5
7.50R20	12	L	6.00	128/126	12.5
7.50R20	14	L	6.00	130/128	12.5



**All Position**

 Recommended

The **Durun YT102** is designed for a wide range of applications and offers excellent mileage in high speed applications as well as urban use.

- Tread compounds offer increased tyre stiffness improving road handling
- High density blading gives improved braking and wet weather performance
- Optimised bead and belt package ensures durability
- Excellent self cleaning tread design

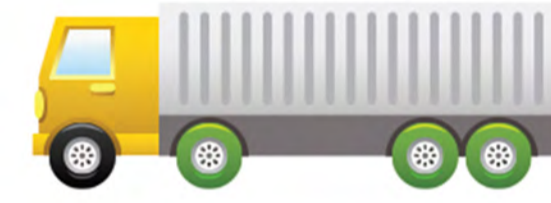


# TBR (Truck and Bus Radial)



## YT902

Size	PR	SS	Rim	LI	TD (mm)
11.00R20	16	K	8.00	150/147	18.5
11.00R20	18	K	8.00	152/149	18.5
12.00R20	18	K	8.50	154/141	20.0
12.00R20	20	K	8.50	156/153	20.0
11.00R20	16	K	8.00	150/147	18.5



**Drive or Trailer**

 Recommended

The Durun YT902 is a drive tyre designed for vehicles that require increased traction in rough terrain.

- The block design gives maximum traction in rough conditions
- This pattern also delivers improved braking
- Optimised bead and belt package ensures durability



# TBR (Truck and Bus Radial)



## YT909

Size	PR	SS	Rim	LI	TD (mm)
11R22.5	16	J	8.25	148/145	22.0
12R22.5	16	F	9.00	150/147	23.2
12R22.5	18	F	9.00	152/149	23.2
12.00R20	18	F	8.50	154/151	24.2
12.00R20	20	F	8.50	156/153	24.2



**All Position**

 Recommended

The **Durun YT909** is designed for a wide range of applications and offers excellent mileage in high speed applications as well as urban use.

- Tread compounds offer increased tyre stiffness improving road handling
- High density blading gives improved braking and wet weather performance
- Optimised bead and belt package ensures durability
- Excellent self cleaning tread design

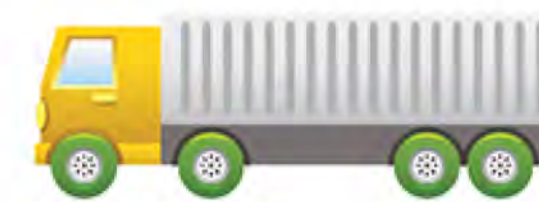


# TBR (Truck and Bus Radial)



## DH101

Size	PR	SS	Rim	LI	TD (mm)
11R22.5	16	K	8.25	146/143	20.0



**All Position**  
Recommended

The **Durun DH101** is a premium highway drive tyre offering high levels of traction and braking whilst reducing wear.

- Tread compounds and profile offer lower rolling resistance
- Engineered to minimise road noise and improve braking
- Optimised bead and belt package ensures durability
- Tyre construction ensures casing integrity and retreadability



## DH107

Size	PR	SS	Rim	LI	TD (mm)
275/70R22.5	16	M	8.25	148/145	14.5 *

\* PBS Approved



**All Position**  
Recommended

The **Durun DH107** is designed for a wide range of applications and offers excellent mileage in high speed application as well as urban use.

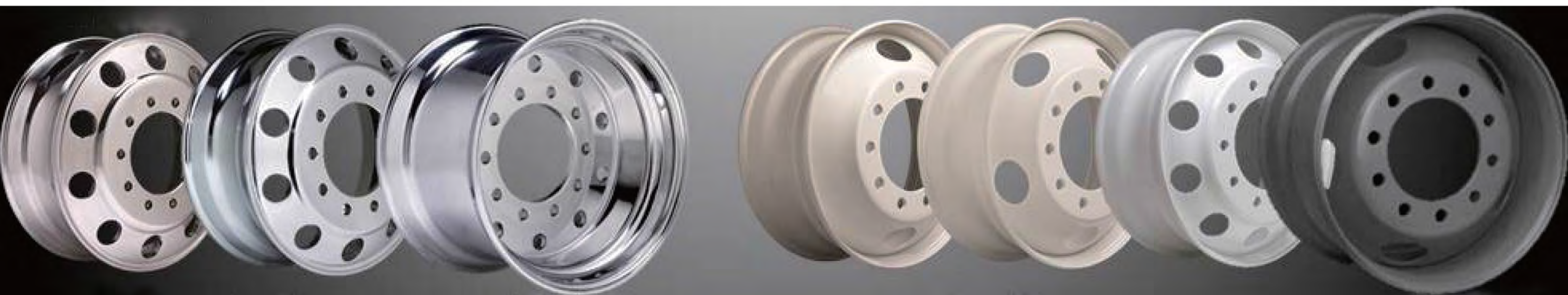
- Tread compounds offers increased tyre stiffness improving road handling
- High density blading gives improved braking and wet weather performance
- Optimised bead and belt package ensures durability
- Excellent self cleaning tread design

# Wheels



Part No.	Size	Outset (mm)	Inset (mm)	Disc thick (mm)	P.C.D (mm)	PCD Holes	Window Holes	Stud Dia (mm)	C.B.D (mm)	Max Load (kg)	Valve
HN225750G01								26.5			
HN225750G02	22.2x7.5	162	138	24	335	10	10	32.5	281.2	3550	70MS-7
HN225750G03								32.5SR22			
HN225750G04	22.5x7.5	162	138	24	285.75	10	10	26.5	220	3550	70MS-7
HN225750G05								32.5			
HN225750G06								26.5			
HN225750G07	22.5x7.5	162	138	24	285	8	8	32.5	221	3550	70MS-7
HN225750G08								32.5SR22			
HN225750G09								26.5			
HN225750G10	22.5x7.5	162	138	24	275	8	8	32.5	214	3550	70MS-7
HN225750G11								32.5SR22			
HN225750G12								24			
HN225750G13	22.5x7.5	162	138	24	275	8	8	32.5	221	3550	70MS-7
HN225750G14								32.5SR22			

Part No.	Size	Outset (mm)	Inset (mm)	Disc thick (mm)	P.C.D (mm)	PCD Holes	Window Holes	Stud Dia (mm)	C.B.D (mm)	Max Load (kg)	Valve
HN225115K01	22.5x11.75	25	0	25	335	10	10	26.5	281.2	4500	40MS
HN225115K02								32.5			
HN225115K03	22.5x11.75	25	0	25	285.75	10	10	26.5	220	4500	40MS
HN225115K04								32.5			
HN225115K05	22.5x11.75	145	120	25	335	10	10	26.5	281.2	4500	40MS
HN225115K06								32.5			
HN225115K07	22.5x11.75	145	120	25	285.75	10	10	26.5	220	4500	40MS
HN225115K08								32.5			





**Tradefaire International Pty Ltd.**  
 ABN: 36 056 385 285  
 62 Tarnard Drive  
 Braeside VIC 3195  
 Ph: 03 9271 1700 | Fax: 03 9271 1788

## The Tyre Sidewall Tells Great Deal of Information

TYRE SIZE				SERVICE CONDITION		
Metric Designation						
315/   Nominal Section Width or Width Code   11.00	80   Nominal Aspect Ratio (H/S) 	R   Construction Code   R	22.5   Nominal Rim Diameter Code (1)   20	154/149   Load Indices (Single/Dual) 	L   Speed Symbol 	 Ply Rating   16PR
Code Designation						

(1) After the nominal rim diameter code there may be a marking, for example C for Commercial Vehicle Tyres with Load Index less than or equal to 121. The additional marking represents a restricted application. Consult Durun and your local tyre regulations organisation for application guidance.

- The size designation on the tyre sidewall includes dimensional and construction characteristics near the service description which consists of one or two load indices and a speed symbol. If no service description is marked on the tyre, consult your local Durun technical service representative.
- The speed symbol relates to the maximum speed permitted for the load carrying capacities associated with the load indices.
- The load indices relate to the maximum load carrying capacities permitted at the speed indicated by the speed symbol.
- If authorised by Durun, you may alter from the designated service description the load carrying capacity based on speed operating condition for special circumstances. Consult with your local Durun technical service representative.
- Tyre width can change by 40% of the change in rim width.

**Read the Service Description Carefully. Load & Speed Index Information are Important. Improper Loading at High Sped Will Greatly Reduce Tyre Life.**

Table of Load Indices

Index	kg	Index	kg	Index	kg	Index	kg
90	600	110	1060	130	1900	150	3350
91	615	111	1090	131	1950	151	3450
92	630	112	1120	132	2000	152	3550
93	650	113	1150	133	2060	153	3650
94	670	114	1180	134	2120	154	3750
95	690	115	1215	135	2180	155	3875
96	710	116	1205	136	2240	156	4000
97	730	117	1285	137	2300	157	4125
98	750	118	1320	138	2360	158	4250
99	775	119	1360	139	2430	159	4375
100	800	120	1400	140	2500	160	4500
101	825	121	1450	141	2575	161	4625
102	850	122	1500	142	2650	162	4750
103	875	123	1550	143	2725	163	4875
104	900	124	1600	144	2800	164	5000
105	925	125	1650	145	2900	165	5150
106	950	126	1700	146	3000	166	5300
107	975	127	1750	147	3075	167	5450
108	1000	128	1800	148	3150	168	5600
109	1030	129	1850	149	3250	169	5800

TBS/LTR  
Speed  
Symbol

F 80  
G 90  
J 100  
K 110  
L 120  
M 130  
N 140

Load Index

Dual  
Single

117  
114 M

Speed  
Symbol

The speed symbol (F~N) represents the maximum speed the tyre is recommended to operate at.

The load index corresponds to the maximum load the tyre is recommended to carry. Remember there are both single and dual indices for load. In some cases, and optional load index may exist - this will vary the speed symbol.

## Many Service Descriptions Indicate a Load Range Using a Ply Rating

Load Range	A	B	C	D	E	F	G	H	J	L	M	N
Ply Rating	2	4	6	8	10	12	14	16	18	20	22	24



2/4 Pinnacle Rd  
Altona North  
VIC 3025

62 Tarnard Drive  
Braeside  
VIC 3195

6 Whytes Ct  
Wodonga  
VIC 3690

199-203 Woodpark Rd  
Smithfield  
NSW 2164

2/22 Octal St  
Yatala  
QLD 4207

20-22 Marriot St  
Cannington  
WA 6107

98-100 Wing St  
Wingfield  
SA 5013

Ph: 03 9391 2882

Ph: 03 9271 1700

Ph: 02 6056 6134

Ph: 02 9756 0685

Ph: 0427 640 468

Ph: 08 9350 6628

Ph: 08 8162 9344